



**BIM** International Summer School

LEARN HOW TO BUILD THE FUTURE

2022, July 11<sup>th</sup> - 22<sup>nd</sup>  
Iasi, Romania

Faculty of Civil Engineering and Building Services  
"Gheorghe Asachi" Technical University of Iasi

**BIM**  
ISS 2022







Register here

<http://www.iss.ci.tuiasi.ro>

Organized by

Faculty of Civil Engineering and Building Services - "Gheorghe Asachi" Technical University of IASI, Romania &  
Faculty of Architecture "G.M.Cantacuzino" Iasi

in partnership with

"Gheorghe Asachi" University Foundation Iasi

The 5th edition of BIM International Summer School addresses to students from civil engineering / MEP and architecture domain and also, to any engineer or architect who activates in construction and wants to learn about this topic.

The BIM-iss' main objective is to prepare students for real life projects and challenges. The request for the BIM software solutions has increased around the world. We want that the students and those who work in the construction domain to become aware of the importance of Building Information Modelling concept.



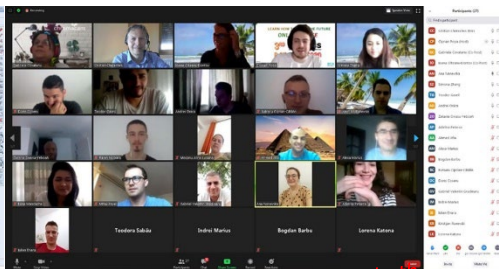
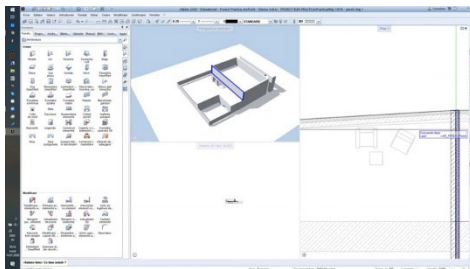
We offer you a comprehensive training to successfully face any architectural/engineering challenges. Beside software usage instructions, the trainers will share valuable tips from their experience in the construction industry.

**Topics** discussed during the classes:

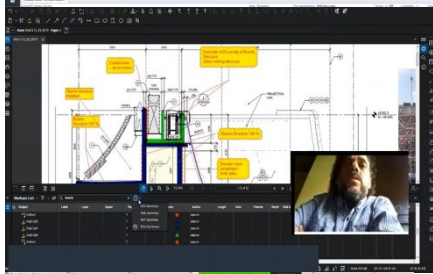
- structural analysis by FEM
- structural elements (beam, column, plate, wall, shell)
- supports and loads
- structural model of reinforced-concrete and steel
- stability analysis
- dynamic (earthquake load) analysis
- design of reinforced concrete structure
- design of steel structure
- building services: Ventilation, Heating, Sanitation, Electrics
- project / BIM management

*Location for 2022 edition:*

The lectures will be held on-site in Computing Laboratories at the **Faculty of Civil Engineering and Building Services**, „Gheorghe Asachi” Technical University of IASI.



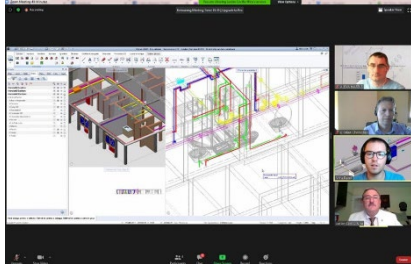
*“In my opinion, there are no weaknesses of the course. It will be just one little thing but it's not anybody's fault: it's the thing that we did the courses online and not in person.” 2020*



*“Excellent knowledge of the presenter in both programs; Interesting and interactive presentation both of the programs and BIM in general; Extremely helpful organizers and presenters that were there to answer all of our questions”*

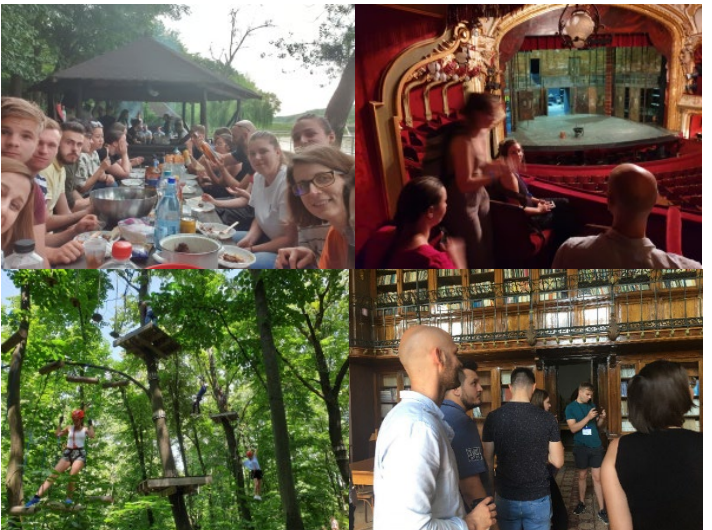
*I liked the balance between work and explanation. We didn't only learn Alplan, but also got to know a bit hsi, its history and romanian people.*

*Thank You !!!*



*“real life examples”*

*“Good collaboration between engineers and architects, helpful in real life”*



**Contact:**

- ✉ [ioana.olteanu@academic.tuiasi.ro](mailto:ioana.olteanu@academic.tuiasi.ro)
- ✉ [gabriela.covataru@academic.tuiasi.ro](mailto:gabriela.covataru@academic.tuiasi.ro)
- 🌐 <http://www.iss.ci.tuiasi.ro/>
- 📘 <https://www.facebook.com/BIMissFCI/>